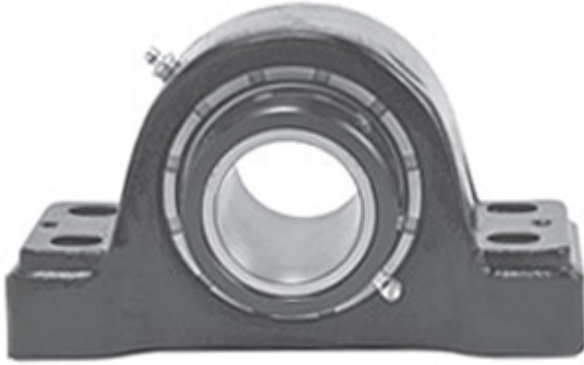




# Shandong XSY Bearing Co., Ltd.

2.438 Inch | 61.925 Millimeter x 3.28 Inch |  
 83.312 Millimeter x 2.75 Inch | 69.85 Millimeter  
 LINK BELT PKB22639FH Pillow Block Bearings



Bearing No. PKB22639FH

PKB22639FH Bearing 2D drawings and 3D CAD models

Category	Pillow Block Bearings
Inventory	0.0
Manufacturer Name	REXNORD
Minimum Buy Quantity	N/A
Weight	9.08
EAN	0793699060287
Product Group	M06288
Number of Mounting Holes	4
Mounting Method	Tapered Adapter Sleeve
Housing Style	4 Bolt Pillow Block
Rolling Element	Spherical Roller Bearing
Housing Material	Cast Steel
Expansion / Non-expansion	Non-expansion
Mounting Bolts	1/2 Inch
Relubricatable	Yes
Insert Part Number	B22639HL
Seals	Floating Labyrinth
Housing Configuration	1 Piece Solid
Inch - Metric	Inch
Other Features	Double Row
Long Description	4 Bolt Pillow Block; 2-7/16" Bore; 2-3/4" Base to Center Height; Tapered Adapter Sleeve Mount; Spherical Roller Bearing; Relubricatable; Cast Steel;



## Shandong XSY Bearing Co., Ltd.

	Floating Labyrinth; Non-expansion
Category	Pillow Block
UNSPSC	31171511
Harmonized Tariff Code	8483.20.40.80
Noun	Bearing
Keyword String	Pillow Block
Manufacturer URL	<a href="http://www.rexnord.com">http://www.rexnord.com</a>
Manufacturer Item Number	PKB22639FH
Weight / LBS	20
Bolt Spacing Minimum	0 Inch   0Millimeter
D	3.28 Inch   83.312 Millimeter
d	2.438 Inch   61.925 Millimeter
Bolt Spacing Maximum	0 Inch   0Millimeter
B	2.75 Inch   69.85 Millimeter
Nominal Bolt Center to Center	7.1 Inch   181 Millimeter
Actual Bolt Center to Center	7.1 Inch   181Millimeter