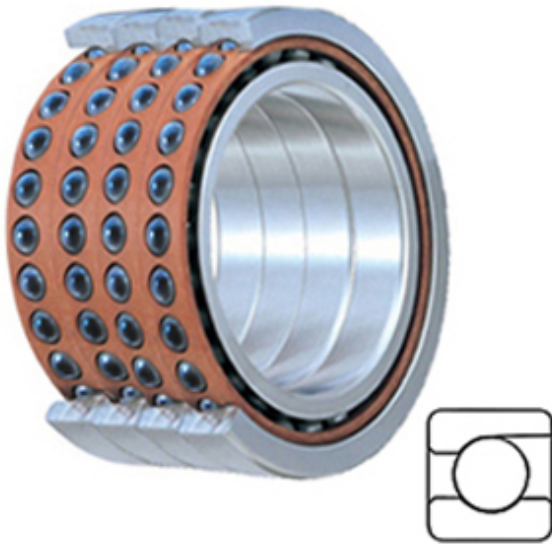




Shandong XSY Bearing Co., Ltd.



2MMC9300WI QUL Bearing 2D drawings and 3D CAD models

TIMKEN 2MMC9300WI QUL Miniature Precision Ball Bearings

Bearing No. 2MMC9300WI QUL

Category	Miniature Precision Ball Bearings
Inventory	0.0
Manufacturer Name	TIMKEN
Minimum Buy Quantity	N/A
Weight	0.018
EAN	0087796339521
Product Group	B04270
Enclosure	Open
Precision Class	ABEC 7 ISO P4
Flanges	No
Material - Ball	Ceramic
Race Material	Steel
Raceway Style	1 Rib Outer Ring
Number of Bearings	4 (1 Quadruplex Set)
Contact Angle	15 Degree
Preload	Light
Cage Material	Phenolic
Rolling Element	Ball Bearing
Mounting Arrangement	Quadruplex-Universal
Flush Ground	Yes
Inch - Metric	Metric
Other Features	Single Row Angular Contact Super High Precision Hybrid Corrosion Resistant Ball
Long Description	10MM Bore; 22MM



Shandong XSY Bearing Co., Ltd.

	Outside Diameter; 6MM Inner Race Width; 6MM Outer Race Width; Open Enclosure; ABEC 7 ISO P4 Precision; No Flange; Ceramic Ball Material; Steel Race Material; 4 (1 Quadruplex Set) Bea
Category	Miniature Precision Ball Bearings
UNSPSC	31171531
Harmonized Tariff Code	8482.10.50.28
Noun	Bearing
Keyword String	Angular Contact Ball
Manufacturer URL	http://www.timken.com
Manufacturer Item Number	2MMC9300WI QUL
Weight / LBS	0.04
Outer Race Width	0.236 Inch 6 Millimeter
d	0.394 Inch 10 Millimeter
Inner Race Width	0.236 Inch 6 Millimeter
Flange Outside Diameter	0 Inch 0 Millimeter
D	0.866 Inch 22 Millimeter