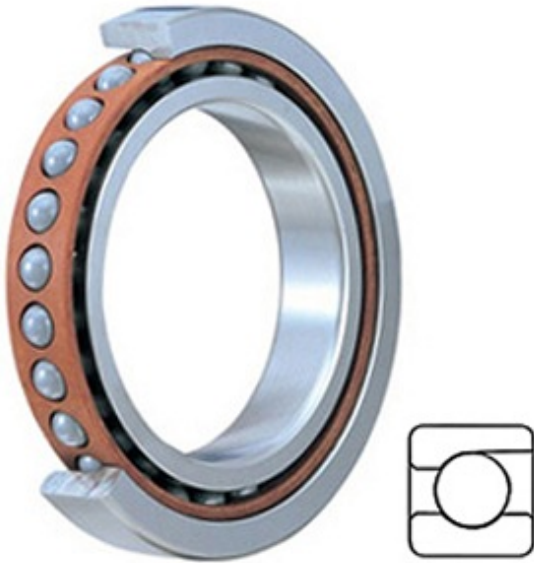




Shandong XSY Bearing Co., Ltd.



B/E2127CE1 Bearing 2D drawings and 3D CAD models

0.472 Inch | 12 Millimeter x 1.26 Inch | 32
 Millimeter x 0.394 Inch | 10 Millimeter SKF
 B/E2127CE1 Precision Ball Bearings

Bearing No. B/E2127CE1

Category	Precision Ball Bearings
Inventory	0.0
Manufacturer Name	SKF
Minimum Buy Quantity	N/A
Weight	0
Product Group	B04270
Enclosure	Open
Precision Class	ABEC 7 ISO P4
Material - Ball	Steel
Number of Bearings	1 (Single)
Contact Angle	15 Degree
Preload	None
Raceway Style	1 Rib Outer Ring
Cage Material	Phenolic
Rolling Element	Ball Bearing
Flush Ground	No
Inch - Metric	Metric
Other Features	Single Row Angular Contact
Long Description	12MM Bore; 32MM Outside Diameter; 10MM Width; Open Enclosure; ABEC 7 ISO P4 Precision; Steel Ball Material; 1 (Single) Bearing; 15 Degree Contact Angle; Phenolic Cage Material; 1 Rib Outer



Shandong XSY Bearing Co., Ltd.

	Ring Race
Category	Precision Ball Bearings
UNSPSC	31171531
Harmonized Tariff Code	8482.10.50.28
Noun	Bearing
Keyword String	Ball Angular Contact
Manufacturer URL	http://www.skf.com
D	1.26 Inch 32 Millimeter
B	0.394 Inch 10 Millimeter
d	0.472 Inch 12 Millimeter